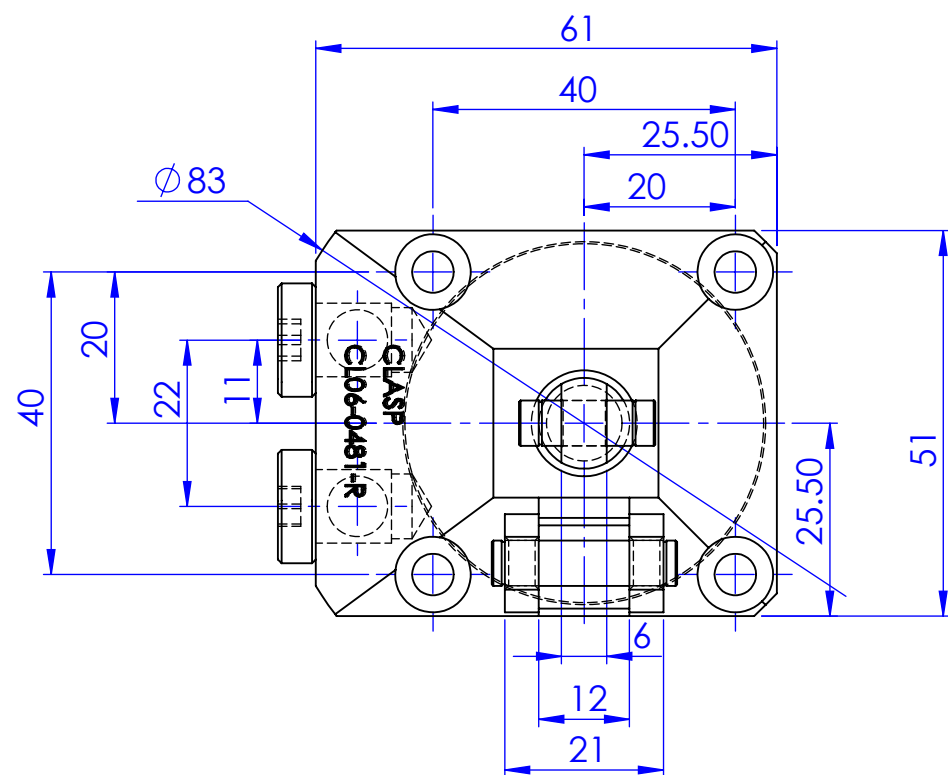
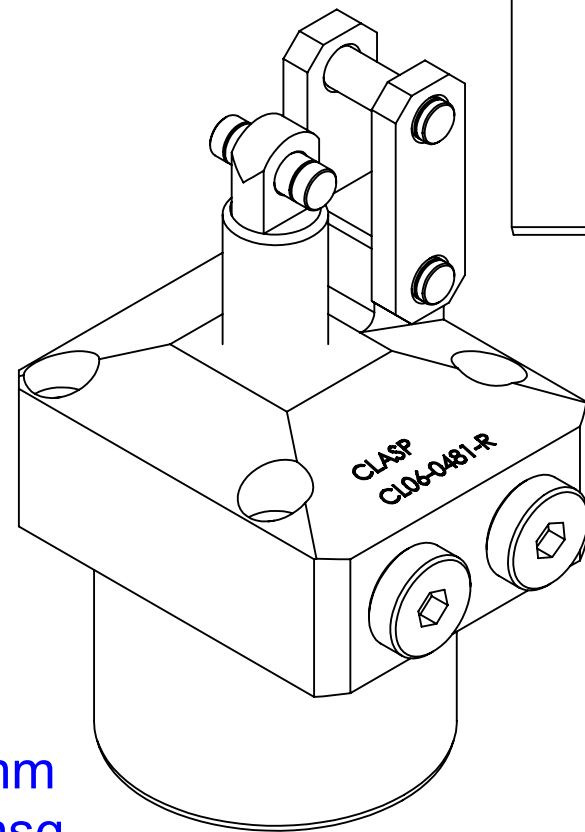
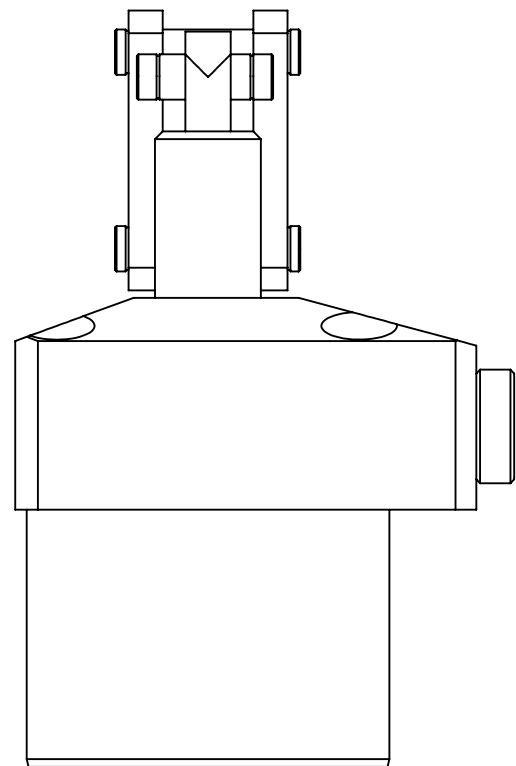
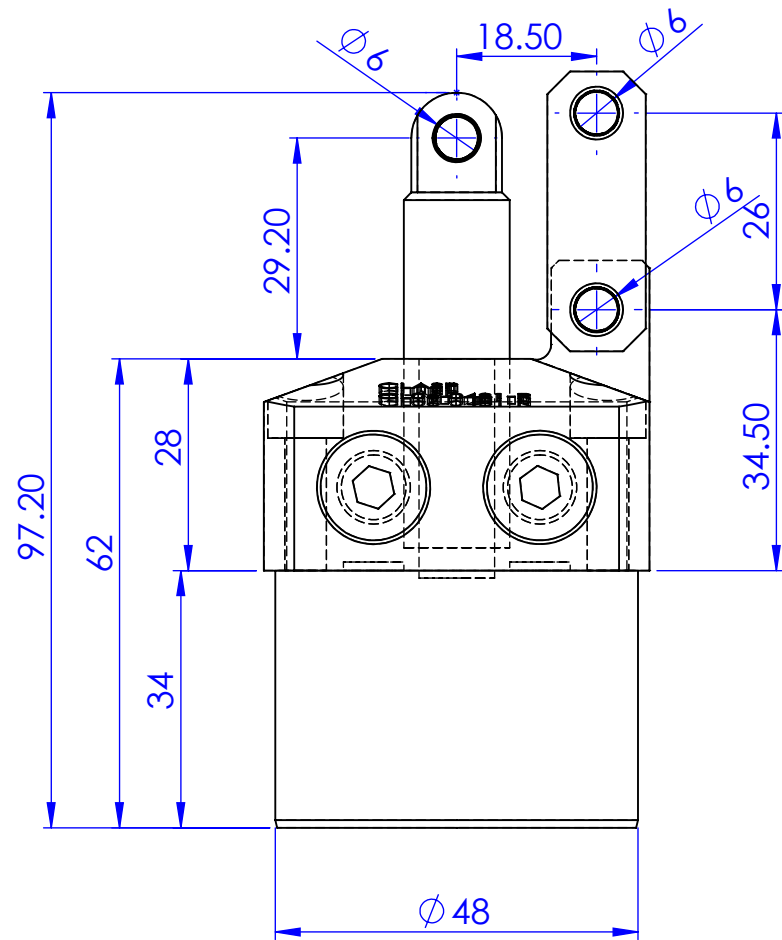
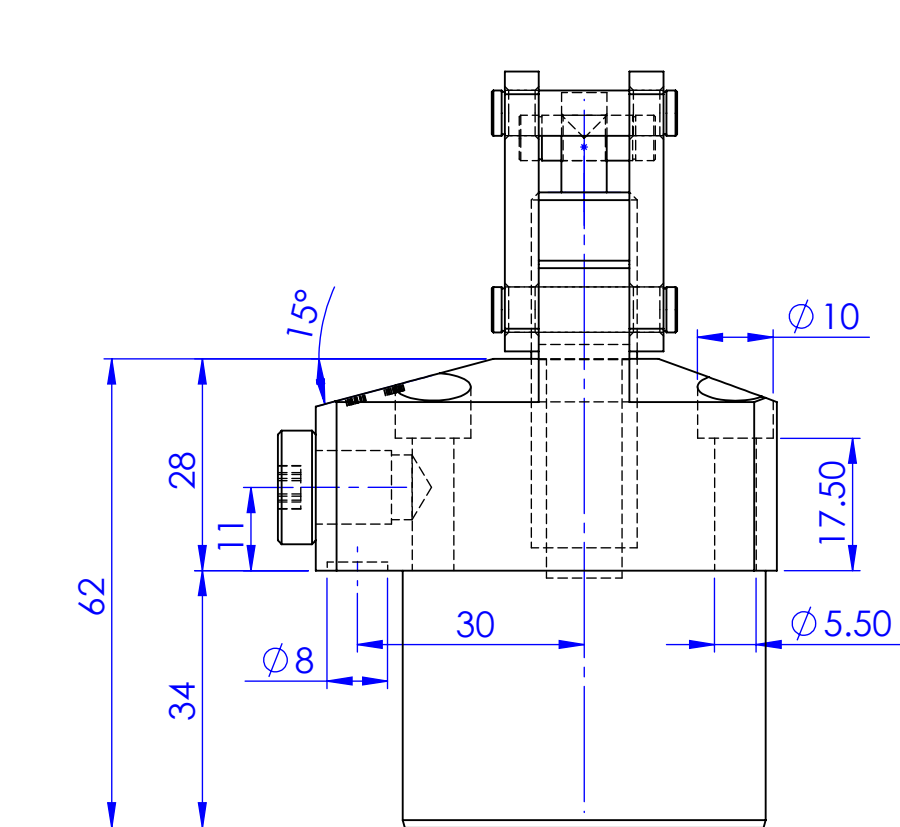


▽▽ (▽▽▽)
DEBURR



CL06-0481-CR
Bore dia - 30mm
Piston dia - 14mm
Full stroke -23.5mm
Locking stroke - 20.5mm
Lock cyl.area - 7.07cmsq

Surface Finish	▽▽▽	▽▽	▽	▽	~	ZONE	SCALE	1:1	PROJECTION
Ra Value μm	0.025	0.05	0.1	0.2	0.4	0.6	0.8	1.0	1.2
Ra Symbol	N1	N3	N2	N4	N5	N6	N7	N8	N9
Drawn	Prabhakar	DESCRIPTION						Qty.	WEIGHT
Checked	Prabhakar	DESCRIPTION						LINK	1.5KG
Approved	19/09/21	CL06-0481-CR						---	Casting/forging/ welding drg.no
Date	19/09/21							Drawing NO	
Clamping elements type	CLASP BANGALORE-72						SHEET: 1 of 1		Sheet No: 1/1

General Tolerance where not specified									
Liner - length or Diameter					Angular-length of shoter side of the angle				
0.5-6	6-30	30-120	120-315	315-1000	1000-2000	Upto 6	6-30	30-120	120-400
± 0.1	± 0.2	± 0.3	± 0.5	± 0.8	± 1.2	$\pm 1^\circ$	$\pm 30^\circ$	$\pm 10^\circ$	$\pm 20^\circ$